

PRECISION PERFORMANCE
SINCE 2002

BRS
Bilt Racing Service

TECHNICAL LIBRARY

LN ENGINEERING / BRS **PDK TRANSMISSION** **SIDEMOUNT COOLER KIT**

INSTALLATION MANUAL

This instruction manual or bulletin is not intended to be substituted for proper judgement, or common sense. Always refer to the factory manual or to the information supplied by the manufacturer with your product for detailed assembly or installation instructions.

All logos and trademarks used for product identification purposes only. Porsche® 911®, Boxster®, Cayman® are registered trademarks of Dr. Ing. H.c. F. Porsche AG.

**Connect to
the warm-up
valve hose**

1

**Connect to the return hose
from the factory PDK Cooler**

2

**To ensure proper cooling efficiency the flow of fluids
must be routed properly.**

(A) on the transmission pairs with (A) on the cooler.

(B) on the transmission pairs with (B) on the cooler.

Coolant hose (1) will connect to the coolant line on the
chassis with the warm up valve.

Coolant hose (2) will connect to the return coolant hose
from the factory PDK cooler.

B

B

A

A

PREPARATION

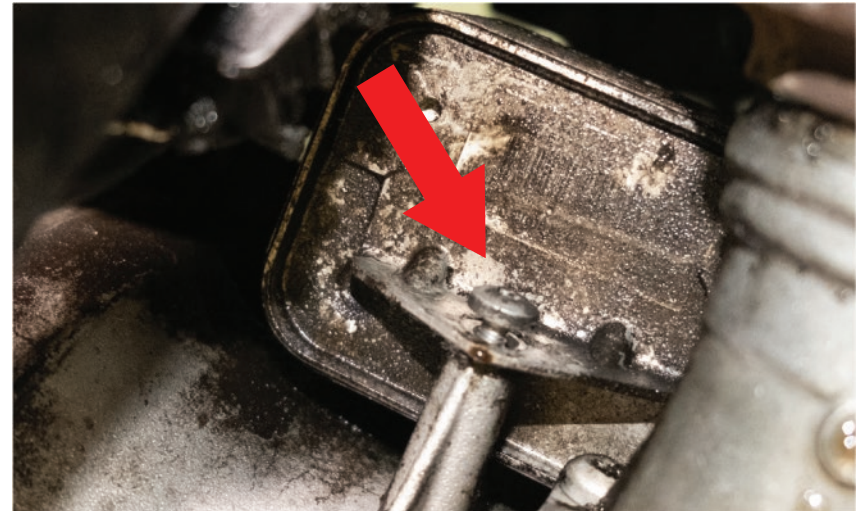
- ▶ Lift the car
- ▶ Drain coolant
- ▶ Drain PDK fluid
- ▶ A pole jack is recommended to be used under the transmission during install



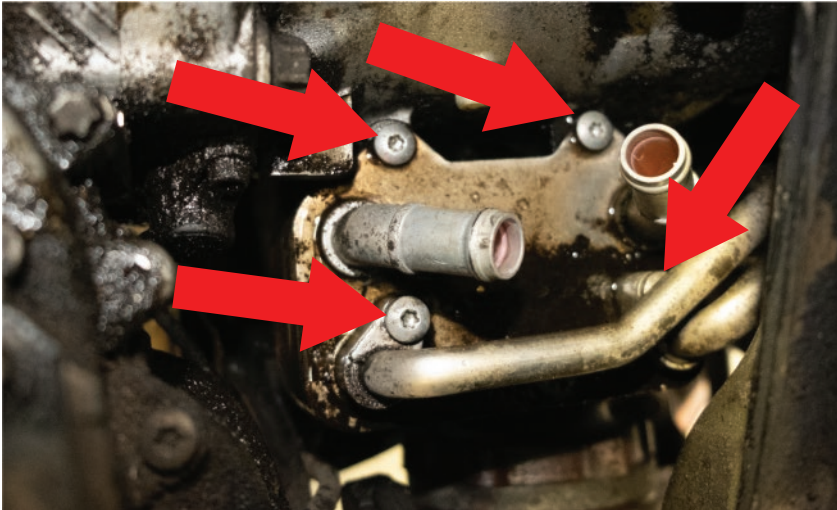
NOTE: The lower diamond brace does not need to be removed from the car for the install, but the plastic baffles will need to be trimmed to fit the cooler. In this application the rivets were drilled out and the baffles were removed entirely, but that is not necessary.

1 Remove Rear "V" brace**2 Remove interior engine room carpet and cover****3 Remove MAF and rubber boot to gain access to top of OEM cooler.****4 Unbolt clasp. Pull hardline from transmission.**

► Be sure to remove the o-rings from inside the inlet/outlet as they may come off of the hardline.

5 Remove bottom bolt from OEM PDK cooler.

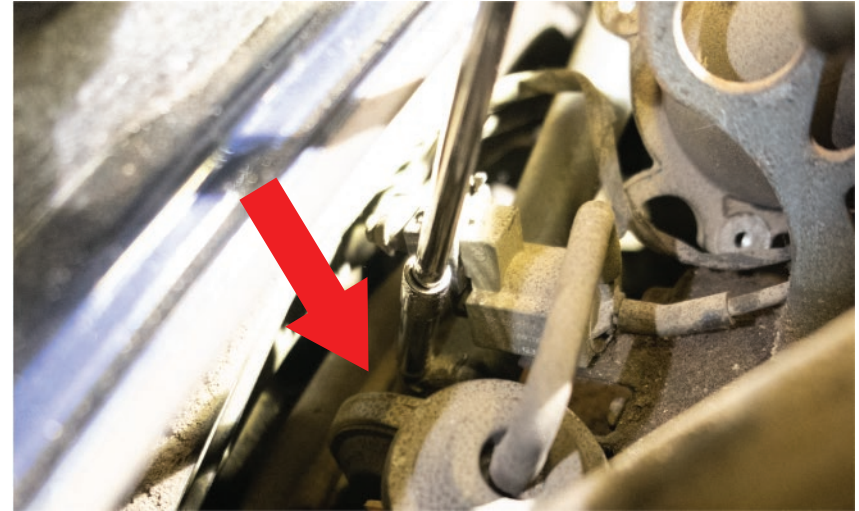
- 6** Remove bolts from hard lines in the top of cooler and bolts attaching cooler to transmission.



► Access to bolts is easier through top of engine compartment. Remove cooler through bottom.

- 7** Locate supplied coolant hoses. Straight hose routes to top barb of cooler. "Z" shaped hose routes to bottom barb on cooler

- 8** Route "Z" hose from lower barb to the warm up valve.



► Hose may require trimming.

- 9** Splice straight hose from top barb into return hose. Second hose from factory cooler.



► Hose may require trimming.

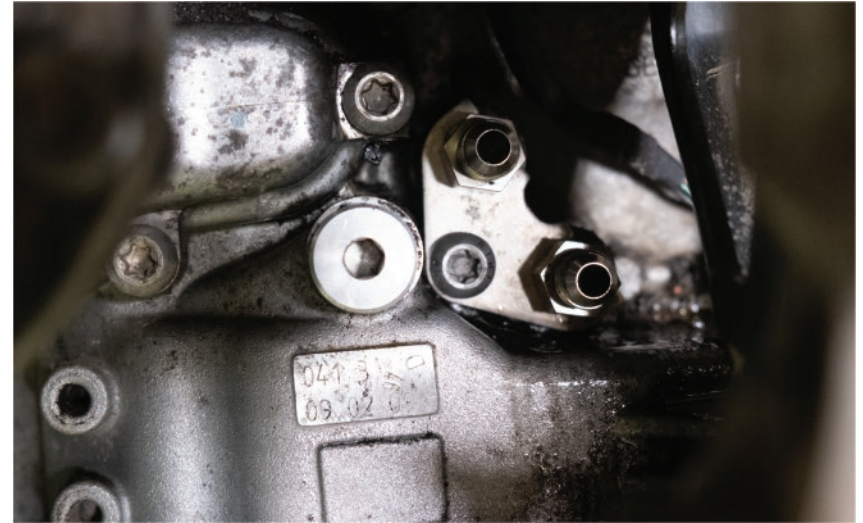
9 - Continued -



9 - Continued -



10 Insert PDK fittings into transmission and replace holding clasp.



11 Loosen lower bolt and remove top bolt on transmission mount.



► Hose may require trimming.

- 12** Cooler will mount in between bolt head and black mount.



► Not in between black mount and transmission!

- 13** Using the two supplied hose clamps, attach coolant hoses to corresponding barb locations. This may be easier with or without cooler fully bolted on and is up to the installers discretion.

- 14** Short PDK hose routes from bottom right transmission fitting to bottom fitting on cooler. Long PDK hose routes from top left transmission fitting to top fitting on cooler.

► See hose routing diagram on the next page



- 15** Make sure all fittings and bolts are tight and in correct locations. Replace "V" brace and interior components.
- 16** Refill PDK fluid to appropriate level.
- 17** Use proper Airlift system to fill coolant system.